

- Suitable for centrifugal pumps and similar applications
- Elastomer can be replaced without moving the drive and the driven device
- Torsional flexibility, maintenance-free
- Light mass, small moment of inertia
- Damp impact and vibration
- Axial plug-in, fail-safety
- Good dynamic properties
- The maximum torque of the elastomer is twice the rated torque
- Refer to document No. 05.101 for installation, operation and maintenance instructions.

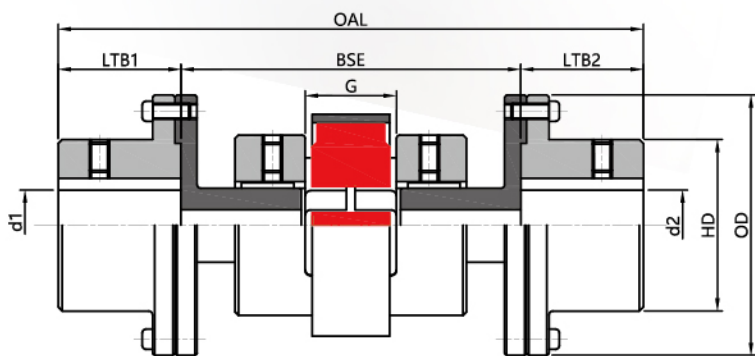
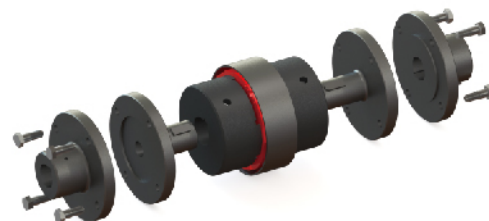


Fig 05.06



05.09

Size	OAL	LTB1-LTB2	G	d1-d2		BSE	OD	HD
				Min Bore Diameter	Max Bore Diameter			
	mm	mm	mm	mm	mm	mm	mm	mm
LS090	159.0	34.9	25.4	12.7	35	88.9	101.6	52.3
	197.1	34.9	25.4	12.7	35	127.0	101.6	52.3
	247.9	34.9	25.4	12.7	35	177.8	101.6	52.3
	298.7	34.9	25.4	12.7	35	228.6	101.6	52.3
LS095	159.0	34.9	25.4	12.7	35	88.9	101.6	52.3
	197.1	34.9	25.4	12.7	35	127.0	101.6	52.3
	247.9	34.9	25.4	12.7	35	177.8	101.6	52.3
	298.7	34.9	25.4	12.7	35	228.6	101.6	52.3
LS099	159.0	34.9	35.6	12.7	35	88.9	101.6	52.3
	197.1	34.9	35.6	12.7	35	127.0	101.6	52.3
	247.9	34.9	35.6	12.7	35	177.8	101.6	52.3
	298.7	34.9	35.6	12.7	35	228.6	101.6	52.3
LS100	158.8	34.9	35.6	12.7	35	88.9	101.6	52.3
	196.9	34.9	35.6	12.7	35	127.0	101.6	52.3
	247.7	34.9	35.6	12.7	35	177.8	101.6	52.3
	298.5	34.9	35.6	12.7	35	228.6	101.6	52.3
LS110	209.6	41.3	41.7	12.7	41	127.0	111.3	59.4
	260.4	41.3	41.7	12.7	41	177.8	111.3	59.4
	310.9	41.3	41.7	12.7	41	228.6	111.3	59.4
LS150	235.2	54.0	49.3	12.7	54	127.0	117.3	78.5
	285.8	54.0	49.3	12.7	54	177.8	117.3	78.5
	336.6	54.0	49.3	12.7	54	228.6	117.3	78.5
LS190	298.5	60.3	49.3	12.7	60	177.8	138.2	60.5
	349.3	60.3	49.3	12.7	60	228.6	138.2	60.5
LS225	323.9	73.0	49.3	19.1	73	177.8	150.9	73.2
	374.7	73.0	49.3	19.1	73	228.6	150.9	73.2
LS276	552.7	79.4	81.0	19.1	79	228.6	162.1	109.5
CS280	615.7	88.9	81.0	27.0	89	228.6	193.5	122.2
CS285	406.4	88.9	81.0	27.0	89	228.6	193.5	122.2